

EbV Elektronikbau- und Vertriebs-GmbH

Our products | Status: February 2021

- THETA heating control and accessories **Page 2-5**
- DELTA heating control **Page 6**
- CETA heating control and accessories **Page 7-9**
- Sensor and accessories **Page 10**
- Boiler control panels for EbV control devices **Page 11**
- heatcon!
... the flexible intelligence **Page 12-15**
- heatapp!
... individual room control via app **Page 16-20**

THETA Heating control

THETA+ Norm controller (EbV- standard)

Standard devices in set-version with sensors, terminals and documentation

- Standard controller for installation in boiler control panels for single- or two-stage heat generators
- for heating and hot water operation, optionally with one or two mixed heating circuits
- cascadable

Technical data:

- Power supply voltage: 230 V, 50-60 Hz
- Power consumption: max. 5,8 VA
- Bus interface: T2B
- Ambient temperature: 0...+60°
- Protection type: IP30
- Protection class according to EN 60730: II
- Protection class according to EN 60529: III
- Spark arrestor: EN 55014 (1993)
- Interference immunity: EN 55104 (1995)
- Housing dimensions: central unit 144 x 96 x 75 mm
- Connections: plug-in screw terminal connections



THETA+ N 2B Set

for the control of:

1x heat generator, single stage
1x direct heating circuit
1x hot water

incl. accessories:

AF 200 Outdoor sensor
KVT 20/2/6 immersion sensor
KVT 20/5/6 immersion sensor
Connection terminals

article number: **922010000**

THETA+ N 23B Set

for the control of:

1x heat generator, single stage
1x direct heating circuit
1x mixed circuit (3-point PI controller)
1x hot water

incl. accessories:

AF 200 Outdoor sensor
VF 202 Flow sensor
KVT 20/2/6 immersion sensor
KVT 20/5/6 immersion sensor
Connection terminals

article number: **9220101000**



THETA+ N 233B Set

for the control of:

- 1x heat generator, single stage
- 1x direct heating circuit
- 2x mixed circuit (3-point PI controller)
- 1x hot water

incl. accessories:

- AF 200 Outdoor sensor
- VF 202 Flow sensor MK 1
- VF 202 Flow sensor MK 2
- KVT 20/2/6 immersion sensor
- KVT 20/5/6 immersion sensor
- Connection terminals

article number: **9220102000**

THETA+ N 2233BVV Set

for the control of:

- 1x heat generator, two-stage
- 1x direct heating circuit
- 2x mixed circuit (3-point PI controller)
- 1x hot water

with two variable outputs for bivalent applications (solar, solid fuel boiler, buffer tank etc.)

incl. accessories:

- AF 200 Outdoor sensor
- VF 202 Flow sensor MK 1
- VF 202 Flow sensor MK 2
- KVT 20/2/6 immersion sensor
- KVT 20/5/6 immersion sensor
- Connection terminals

article number: **9220106000**



THETA+ N 2233BVVC Set

for the control of:

- 1x heat generator, two-stage
- 1x direct heating circuit
- 2x mixed circuit (3-point PI controller)
- 1x hot water

with two variable outputs for bivalent applications (solar, solid fuel boiler, buffer tank etc.)

incl. accessories:

- AF 200 Outdoor sensor
- VF 202 Flow sensor MK 1
- VF 202 Flow sensor MK 2
- KVT 20/2/6 immersion sensor
- KVT 20/5/6 immersion sensor
- Connection terminals

article number: **9200209000**

THETA+ N 2233BVVC-OT Set

for the control of:

- 1x heat generator, two-stage
- OpenTherm interface
- 1x direct heating circuit
- 2x mixed circuit (3-point PI controller)
- 1x hot water

with two variable outputs for bivalent applications (solar, solid fuel boiler, buffer tank etc.)

incl. accessories:

- AF 200 Outdoor sensor
- VF 202 Flow sensor MK 1
- VF 202 Flow sensor MK 2
- KVT 20/2/6 immersion sensor
- KVT 20/5/6 immersion sensor
- Connection terminals

article number: **9220319000**

Legend:

- | | |
|---------------------------------|------------------------|
| N = standard housing | B = domestic hot water |
| 2 = single stage | VV = variable outputs |
| 22 = two-stage | C = communication |
| 3 = one mixed heating circuit | OT = OpenTherm |
| 33 = two mixed heating circuits | |

THETA Accessories



THETA+ RS-L room unit

- Remote control with integrated room sensor for recording the room temperature
- Identical operation to the THETA heating controller
- Activation of room-related parameters such as heating optimization, heating characteristic curve adaptation, room influence, room minimum and maximum temperature etc.
- Connection via 2-wire bus

article number: **922006000**



THETA RFF room sensor

- Remote control with integrated room sensor for recording the room temperature
- Switching the operating modes (heating - automatic - setback)
- Temperature adjustment
- Connection via 2-wire bus

article number: **9203001000**



Room thermostat THETA+ RSC-OT

Room unit for boiler controls with OpenTherm interface

- Direct connection to heat generator via OpenTherm
- Weather-compensated flow temperature control with consideration of the building type (depending on OT automats)
- Room control or room influence via integrated room temperature sensor
- Weekly switching program according to EnEV
- comfortable control of heating from the living room

article number: **922010000**



heatapp! base T2B

Remote control of the EbV-THETA controller with and without reference room control

- Operation via app (heatapp! app)
- The heatapp! base T2B can be connected directly to the EbV-THETA controller via the integrated system bus T2B
- Functions of the heatapp! base T2B correspond to those of the heatapp! base
- Optionally expandable with the heatapp! gateway for individual room control
- Compatible with all EbV-THETA controllers from version 3.0 onwards

article number: **9600302000**



Wall-mounted housing WG 500

- Wall mounted housing for THETA Norm controls
- Mains switch, automatic/manual mode changeover and fuse 6.3 A
- completely pre-wired with central terminal strip
- Clear cover
- Protection class IP 54

*Delivery without regulation

article number: **9540924000**



Wall mounting base MS-K (OEM specific)

- for retrofitting or expanding heating controllers with the THETA+ control system
- Simple mounting due to all-pole, screwless connection of sensors and actuators
- Protection class IP 20

*Delivery without regulation

article number: **92040000**



THETA ZM 0-10 V Power Set

Additional module 0-10 V

- DIN rail module
- Additional module for connection via the system bus (T2B)
- for external setpoint switching incl. power supply unit

article number: **9420016000**



THETA ZM KM-OT

OpenTherm cascade module

- Top-hat rail module for connection to OpenTherm vending machines
- Up to 8 modules cascable via address switch
- only in conjunction with THETA+ N 2233BVVC

article number: **9204011000**



Cable set KSF GAMMA-THETA

Connection adapter

- for easy rewiring of the sensor terminal strip from GAMMA to THETA

article number: **9200200000**

DELTA heating control

DELTA+ Heating control

DELTA+ controller in set version with sensors and documentation

- Weather-compensated boiler temperature control for variable heating mode
- Simple operation through rotary potentiometer
- Circulation pump logic, summer/winter automatic, frost protection circuitry
- Electronic storage tank temperature control, storage tank priority circuit, charge pump run-on, operation selector switch, boiler start-up protection
- 2-channel digital timer | **NEW!**

Technical data:

- Power supply voltage: 230 V, 50 Hz
- Power consumption: max. 4 VA
- Extra-low voltage: 10 V DC
- Contact load relay output: 4 (2) A
- Ambient temperature: 0-50° C
- Protection class: IP 30
- Connection technology: Screw terminals

**DELTA becomes DELTA +
NOW with new watch**



DELTA+ 2B Set

for the control of:

- 1x heat generator, single stage
- 1x direct heating circuit
- 1x hot water

incl. accessories:

- AF 200 outdoor sensor
- KVT 20/2/6 immersion sensor
- KVT 20/5/6 immersion sensor
- Connection terminals

article number: **9112102000**

DELTA+ 23B Set

for the control of:

- 1x heat generator, single stage
- 1x direct heating circuit
- 1x mixed circuit (3-point PI controller)
- 1x hot water

incl. accessories:

- AF 200 outdoor sensor
- VF 202 flow sensor
- KVT 20/2/6 immersion sensor
- KVT 20/5/6 immersion sensor
- Connection terminals

article number: **9112103000**

DELTA+ 223B Set

for the control of:

- 1x heat generator, two-stage
- 1x direct heating circuit
- 1x mixed circuit (3-point PI controller)
- 1x hot water

incl. accessories:

- AF 200 outdoor sensor
- VF 202 flow sensor
- KVT 20/2/6 immersion sensor
- KVT 20/5/6 immersion sensor
- Connection terminals

article number: **9112107000**

CETA heating control

CETA Heating control | Temperature difference control

CETA controller in set version with sensors and documentation

- Heating circuit controller with differential temperature control
- depending on the model, the CETA heating controller offers different functions:
Differential temperature control, double differential temperature control (also with PWM/0-10V control), heating circuit controller with burner control and hot water charge control, heating circuit controller with differential temperature control
- elegant design and clear programming through four-key operation
- modular extension possible

Technical data:

- Power supply voltage: 230 V, 50-60 Hz
- Power consumption: max. 2.1 VA
- Fuse: 6,3A
- Ambient temperature: -10...+50°
- Protection class: IP 30
- Protection class according to EN 60730: II
- Housing dimensions: 145.5 x 161 x 48 mm
- Connection technology: Screw terminals



CETA 100

Simple temperature difference control

- one relay output
- three sensor inputs
- Possibility of heat balancing via optional return sensor

incl. accessories:

1x KVT 20/2/6 immersion sensor
1x PT 1000/6 collector sensor

article number: **9172001000**

CETA 101

Dual temperature differential control

- three relay outputs
- four sensor inputs
- Parameterization option for two separate differential controls
- Heat generator lock
- Possibility of heat balancing via optional return sensor

incl. accessories:

1x KVT 20/2/6 immersion sensor
2x PT 1000/6 collector sensor

article number: **9172002000**

**CETA 103**

Double differential temperature control with PWM/ 0-10 V control

- four relay outputs
- four sensor inputs
- Parameterization option for two separate differential controls
- Heat generator lock
- Possibility of heat balancing via optional return sensor
- Parameterization option for double collector systems and storage tank charging switchover

incl. accessories:

1x KVT 20/2/6 immersion sensor

2x PT 1000/6 collector sensor

article number: **9172008000**

CETA 104

Heating control for single-stage or modulating heat generators (OpenTherm), direct heating circuit and hot water

Heat generator:

Control of single-stage burners via relay output, alternatively for modulating boilers with standardized OT interface

Direct heating circuit:

Weather-compensated control of an unmixed heating circuit via relay output

Water heating:

Control of a storage tank charging pump for hot water charging via relay output

incl. accessories:

2x KVT 20/2/6 immersion sensor

1x AF 200 outdoor sensor

article number: **9172003000**

CETA 106

Heating control for mixer heating circuit and differential temperature control

Mixed heating circuit:

Weather-compensated control of a mixed heating circuit via three relay outputs

Temperature difference control:

Temperature differential control with one potential-free relay output and two sensor inputs, ideally suited for controlling a solids charging pump

incl. accessories:

1x VF 202 B flow sensor

1x AF 200 outdoor sensor

article number: **9172000000**

CETA Accessories



CETA RC room unit

- Remote control for the device series CETA
- Operation of all heating circuit parameters from the living room
- Room sensor for recording the room temperature
- Connection via 2-wire bus

article number: **917010000**

Room thermostat



CETA RC-OT

Room unit for boiler controls with OpenTherm interface

- Weather-compensated flow temperature control with consideration of the building type (depending on OT automats)
- Room control or room influence via integrated room temperature sensor
- Direct connection to heat generator via OpenTherm
- Programmable switching times for heating circuit and hot water
- Remote control for heating systems with integrated room control
- Display of operating mode, temperature and time
- clear language-neutral display
- Simple intuitive operation via touch
- simple wall mounting

article number: **917010100**

Sensors and accessories for EbV heating controls



Immersion sensor KVT 20

- Suitable for device series CETA, THETA, GAMMA, DELTA, BETA, heatcon!
- Ø 6mm
- Connection via 2-wire bus

Types:

- KVT 20/2/6, connection cable length 2m
- KVT 20/5/6, connection cable length 5m

article number: **9520937000**

article number: **9520938000**



Collector flow sensor PT 1000/2,5/6

- for CETA and THETA regulation 2233BVV
- Connection cable length 2.5m
- Connection via 2-wire bus

article number: **9520953000**



Outdoor sensor AF 200

- Suitable for device series CETA, THETA, GAMMA, DELTA, BETA, heatcon!
- in round housing with central fixing screw and strain relief
- 2000 Ω

article number: **9520903000**



Flow sensor

- Suitable for device series CETA, THETA, GAMMA, DELTA, BETA, heatcon!

Types:

- VF 202B, connection cable length 2m
- VF 204B, connection cable length 4m

article number: **9520921000**

article number: **9520920000**



heatapp! sense wire

Room sensor for recording the actual temperature in the reference room

Functions:

- Optional room sensor for heatapp! base T2B
- Wired
- Connection to the E1 input of heatapp! base or heatapp! base T2B

article number: **9600051000**

Boiler control panel for EbV controllers



*image similar

Switch panel KF- T

- Suitable for THETA and heatcon! Heating controls

Equipment:

- Power switch I/O
- Operation selector switch
- Boiler temperature controller
- Safety temperature limiter
- Indicator lights for burner fault message and overtemperature fault

*Delivery without regulation

article number: **931115000**

Cable sets:

- For installation of the EbV controllers in the boiler control panels

THETA:

- KS KF-T EX 233BVV

article number: **9430213064**

heatcon!:

- KS heatcon-EC

article number: **9600610000**



Control panel KSP A03 2020

Boiler control panel in closed housing for direct mounting on the boiler

- Suitable for controller types DELTA and THETA
- Mains voltage: 230 V/ 50 Hz

Equipment:

- Power switch I/O
- Operating mode selector switch Automatic/ Manual/ TÜV
- Boiler temperature controller adjustable from 8°C to 94°C
- Safety temperature limiter
- Indicator lights for burner fault message and overtemperature fault

*Delivery without regulation

article number: **9340137000**

Cable sets:

- For installation of the EbV control devices in the boiler control panels

THETA:

- KS KSP03 2020 Theta

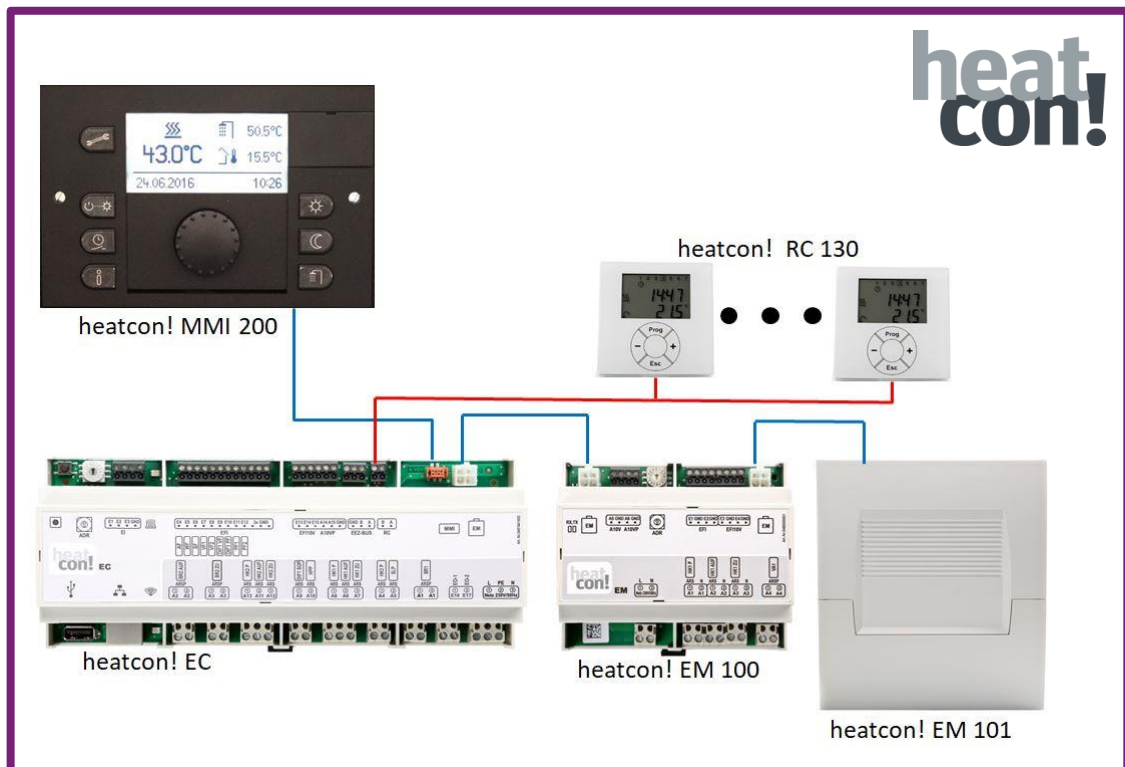
article number: **9340213000**

DELTA:

- KS KSP03 2020 Delta

article number: **9340210000**

heatcon! Control system



System overview

heatcon! EC 1321 pro*

- Basic controller, central control and regulation unit

for the control of:

- 2x mixer heating circuit | expandable via EM 100/101 (max. 2)
- 1x direct heating circuit
- 2x 0-10V/PWM output | switchable, expandable via EM 100/101
- Hot water
- Cascade operation (two active energy generators)
- 3x differential control solar/solid (optional)
- Buffer management (optional)
- contains further data bus connections for system expansion
- can be used as a mini cascade
- Top-hat rail mounting in the power generator



Technical data:

- Operating system: Linux
- Connections network, USB: RJ45 Ethernet, USB 2.0
- Power supply: 230V ± 10%, 50Hz
- Power consumption: max. 9VA
- Protection class: I (with functional earth)
- Protection class: IP00
- Power generator bus: OpenTherm
- Housing dimensions: 210 x 90 x 61 mm (LxWxH) with top-hat rail

*Sensors are not included in the scope of delivery

article number: **9600311000**



heatcon! MMI 200

- Control unit for operating the heatcon! overall system without Internet browser
- Connection to the EbV system bus
- Operation via quick selection keys and rotary pushbutton

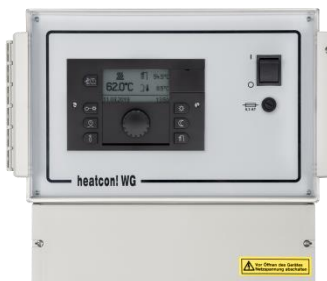
Technical data:

- Housing dimensions: 144 x 96 x 29 mm (LxWxH)
- Display: Graphic display
- Color : anthracite

incl. accessories

- Connecting cable to the EC

article number: **9600400000**



heatcon! EC 1321 pro WG Set

consisting of:

- heatcon! EC 1321 pro
Basic controller, central control and regulation unit with Ethernet connection for operation via PC and heatapp! app
- heatcon! MMI 200
Operating device for connection to the EbV system bus for operating the heatcon! overall system without internet browser
- heatcon! WG 1000 mounted
- heatcon! Sensor set
contains 1x AF 200, 2x VF202B, 1x KVT 20/2/6, 1x KVT 20/5/6

for the control of:

- 2x mixer heating circuit | expandable via EM 100/101 (max. 2)
- 1x direct heating circuit
- 2x 0-10V/PWM output | switchable, expandable via EM 100/101
- Hot water
- Cascade operation (two active energy generators)
- 3x differential control solar/solid (optional *)
- Buffer management (optional*)

*Sensors are not included in the set

- menu-driven commissioning
- prewired
- Connection via terminal block

article number: **9600312000**



heatcon! WG 1000

- Wall-mounted housing for mounting the heatcon! EC and heatcon! MMI
- Inputs and outputs of the heatcon! EC pre-wired with terminal strip
- Mains switch, fuse 6.3 AT
- Protection class 65
- Clear cover

*Delivery without control and control unit

article number: **9540180000**



heatcon! EM 100

- for the extension of the heatcon! EC by e.g. a heating circuit as well as extension of the inputs and outputs
- Top-hat rail mounting
- The heatcon! EM is connected via the EbV device bus to the heatcon! EC connected
- Connection of a maximum of two heatcon! EM to one heatcon! EC

Inputs and outputs

- 3x output relay (heating circuit extension)
- 1x output potential free
- 2x output 0-10V/PWM (switchable)
- 2x input sensor
- 2x input sensor/0-10V

*Sensors are not included in the scope of delivery

Equipment:

- The heatcon! EM 100 is supplied with top-hat rail housing
- incl. heatcon! Device bus cable short (280 mm)

article number: **9600704000**



heatcon! EM 101

- for the extension of the heatcon! EC by e.g. a heating circuit as well as extension of the inputs and outputs
- Wall-mounted housing
- The heatcon! EM is connected via the EbV device bus to the heatcon! EC connected
- Connection of a maximum of two heatcon! EM to one heatcon! EC

Inputs and outputs

- identical to heatcon! EM 100

Equipment:

- incl. heatcon! Device bus cable long (3000 mm)

article number: **9600708000**



heatcon! GBA 100

- Device bus connection for extending the wiring of heatcon! modules (EC/EM)
- for connecting cascades with more than two heatcon! EC
- for greater distance between the heatcon! EC within a cascade
- Top-hat rail mounting

Inputs and outputs

- 2x device bus plug contact
- 2x device bus screw terminals

Equipment:

- incl. heatcon! Device bus cable short (280 mm)
- incl. heatcon! Device bus cable long (3000 mm)

article number: **9600710000**



heatcon! RC 130

- Living room remote control with room temperature detection
- Connection via a 2-wire bus (h2b bus) to the heatcon! EC
- Connection of up to five heatcon! RC 130 to the heatcon! -system (1*per heating circuit incl. two EM modules)

Functions:

- Display and setting of room setpoint
- Display room actual temperature
- Status displays (standby, summer mode, automatic, etc.)

article number: **9600402000**

heatcon! Sensor set

consisting of:

- 1x outdoor sensor **AF 200**
- 2x flow sensor **VF 202B**, connection cable length 2m
- 1x immersion sensor **KVT 20/2/6**, connection cable length 2m
- 1x immersion sensor **KVT 20/5/6**, connection cable length 5m

article number: **9900902000**

heatcon! Device bus cable

- heatcon! Device bus cable 280mm (plug/plug)
- heatcon! Device bus cable 3000mm (plug/stranded wire)

article number: **9600906000**

article number: **9600907000**

Optional:

Extension of the heatcon! System with the heatapp! individual room control system

The *heatcon!* system can be expanded with the radio-based individual room control *heatapp!* to provide individual room control for up to 24 rooms.

For this purpose, the *heatapp!* gateway must be connected via the Ethernet interface to the *heatcon! EC* via the Ethernet interface.

It is operated via the *heatapp!* app using a tablet or smartphone.

For more information on the *heatapp!* system, see page 16 of the EbV product overview and <https://learning.ebv-gmbh.de/>.

heatapp! individual room control

heatapp! the energy saver for every heating system



heatapp! supplements every heating system with a convenient, radio-based individual room control.

Operation of the heating via smartphone or tablet at any time. Each room can be heated or lowered individually on site or remotely as needed.

heatapp! works with wall radiators, floor heating and electric heaters and any heat source, whether oil, gas, solar or heat pump. Communication in the heatapp! system takes place via Z-Wave radio technology and WLAN/LAN (see below).

Optionally, the heatapp! system can be connected directly to the heat generator. The central unit of the system (heatapp! base) then sends the individual room requirements directly to the heat source.



heatapp! app

Access to the heating from anywhere and at any time.
Convenient operation via smartphone and tablet.

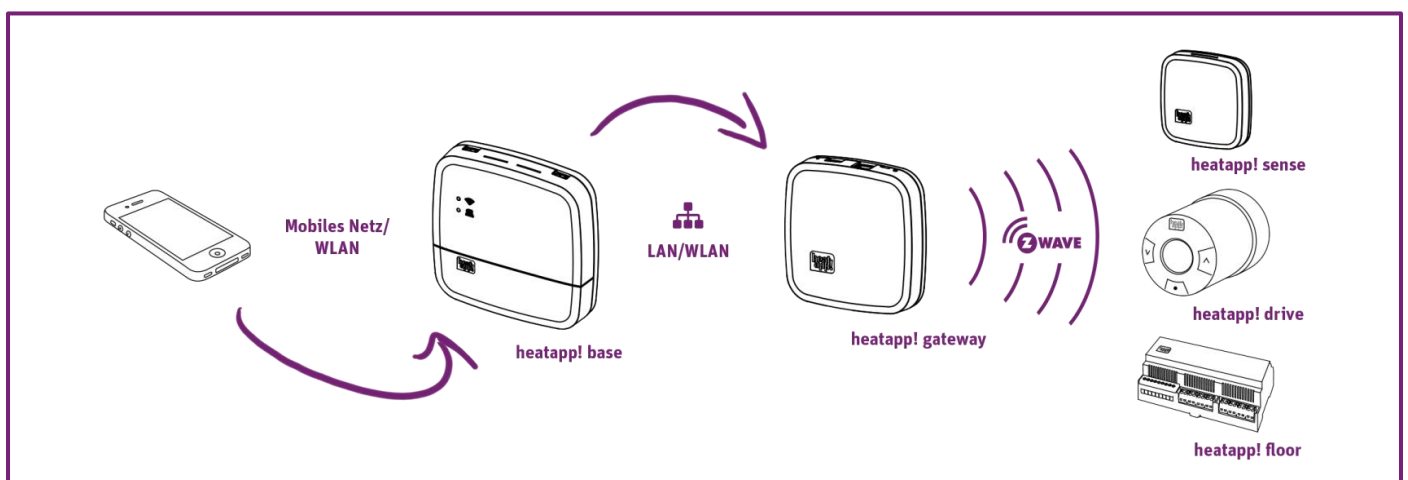
Some app features:

- Change comfort temperature of individual rooms
- Name rooms and add photos
- Configure switching times for each room
- Manage users and set permissions
- Regulation of hot water (with OT connection)
- Current weather information
- Live View with current statistics

heating cost reduction of up to 30% ·

easy to retrofit · Environmental protection ·

Made in Germany!



heatapp! - comfort, design, energy efficiency



heatapp! starter set "drive" for wall radiators

System for individual room control of heating systems

Optional: Connection to the heat source via the interfaces OpenTherm, switching contact or 0-10 V

Set consisting of:

- 1x heatapp! base - central unit of the system
- 1x heatapp! gateway - for in-house communication
- 3x heatapp! drive - radio actuators

article number: **9600903000**



heatapp! starter set "floor" for underfloor heating

System for individual room control of heating systems

Optional: Connection to the heat source via the interfaces OpenTherm, switching contact or 0-10 V

Set consisting of:

- 1x heatapp! base - central unit of the system
- 1x heatapp! gateway - for in-house communication
- 1x heatapp! floor - 8-channel zone controller
- 3x heatapp! sense - wireless room sensor

article number: **9600910000**

- **Both starter sets are alternatively available with T2B interface for connection to the EbV-THETA controller**

heatapp! starter set drive T2B (9600904000) | heatapp! starter set floor T2B (9600911000)

heatapp! installation kit

for setting up the initial commissioning of the heatapp! system

Set consisting of:

- heatapp! USB LAN adapter
- LAN cable
- Transport bag

Using the heatapp! installation kit, heatapp! base and gateway are connected to the PC/laptop for the initial setup, so that the user interface can be called up in the Internet browser.

article number: **9600915000**



heatapp! installation stick (WLAN)

for setting up the initial commissioning of the heatapp! system

The heatapp! installation stick establishes its own network to heatapp! base and gateway and serves as an ALTERNATIVE to the installation kit.

article number: **9600916000**



heatapp! drive

Radio actuator for the control of a single radiator

Replaces the conventional thermostatic head, battery operated

Functions like:

- Window open detection
- Temperature setting also directly at the actuator
- Anti-blocking function of the valve spindle
- Battery status detection

incl. accessories:

- 1x adapter for Danfoss RA valves
- 1x adapter for valves M30x1,5
- 1x Allen key
- 2x batteries AA

article number: **9600100000**



heatapp! floor

Radio controller for the control of underfloor heating systems/ heaters

Data:

- for up to 8 zones/rooms with up to 3 thermoelectric actuators each (max. 24 actuators)
- for 230V actuators normally closed
- Antenna: lead out of the distribution cabinet, to improve the radio range
- integrated repeater function

incl. accessories:

- 1x ext. antenna

*Delivery without actuators

article number: **9600801000**



heatapp! sense

Radio room sensor for recording the actual temperature in rooms with underfloor heating

Data:

- Communication via Z-Wave radio
- battery operated

incl. accessories:

- 2x batteries AAA

article number: **9600050000**



heatapp! base

central control and regulation unit of the system

Functions:

- Can optionally be connected to the boiler via interfaces such as OT, relay or 0-10V and transmit the desired heat demand
- Control of up to 24 rooms
- Communicates with the heatapp! gateway via the home network

Data:

- LAN connection
- USB port for optional WLAN stick
- Power supply 230V

incl. accessories:

- LAN cable
- 6x screws and strain relief

article number: **9600301000**



heatapp! gateway

central communication interface in the heatapp! system

Functions:

- Receives and sends information of all radio components by radio
- Serves as a switching point to the heatapp! base

Data:

- LAN connection
- integrated WLAN module
- Radio communication via Z-Wave
- Power supply 230V

incl. accessories:

- LAN cable
- Plug-in power supply

article number: **9600200000**



heatapp! repeater S

to improve radio coverage

- Communication via Z-Wave radio
- Mounting with plug-in power supply or on flush-mounted box

incl. accessories:

- Plug-in power supply

article number: **9600921000**

Note: Our heatapp! repeater (part number: 9600920000) has been discontinued and is no longer available from EbV.



heatapp! WLAN stick (for heatapp! base)

WLAN connection to the home network

The heatapp! WLAN stick optionally establishes a connection to the home network if there is no possibility to connect the heatapp! base to the router of the network via LAN cable.

article number: **9600925000**



heatapp! gateway power supply unit

Plug-in power supply suitable for the heatapp! gateway

Functions:

- for heatapp! gateway with 240 VAC mini USB connector

article number: **9600930000**



heatapp! adapter set

Adapter set for radiator valves

Set includes:

- RAV 34 mm with 4 notches
- RAVL 25.5 mm with 4 notches

article number: **9600935000**

In addition, we are happy to support you with heatapp! image, video and text material for heatapp! advertising appearances on your website, in catalogs, flyers, etc. We also provide you with heatapp! flyers and displays for your customers or trade fair appearances. Please contact us by e-mail heatapp@ebv-gmbh.de.

Contact:

EbV Elektronikbau- und Vertriebs-GmbH

Heisterner Weg 8-12

57299 Burbach

Tel.: +49 2736 443050

Fax: +49 2736 8266

E-Mail: info@ebv-gmbh.de

www.ebv-gmbh.de

Authorized representative managing director:

Dipl. Kfm. Andreas Fries

Register court: Siegen Local Court

Registration number: HR 1707

VAT ID No: DE126572682